



Hartnell College's Center Identities

Cathryn Wilkinson, Vice President of
Academic Affairs

Clint Cowden, Dean of Academic Affairs
(Alisal and Castroville)

Mostafa Ghous, Dean of Academic
Affairs (Soledad and King City)



- 1. General Education for GE certificate**
 - 12 months daytime**
 - 24 months evening**
- 2. An onramp to EVERY major at Hartnell**
- 3. Express Lane finish faster** 
 - Full-time cohort programs**
- 4. Professional programs** 
 - Working Adults**



- For full-time students
- Accelerated Cohort
- All classes on the pathway are guaranteed
 - Can be completed in 2 years
 - M-Th 8 am - 5 pm
 - Organized around respecting student schedule
- Hold seats in each section for Express Lane
 - Approx. 17 seats per section
- “The easy button to graduate in 2 years”

Day Programs



Rising Scholars

General Ed for

Transfer



Noncredit ESL Cert



Ag Business AST



**Administration of
Justice AS & Cert**

Phase 1 – Programs Started

Phase 2 – Programs Starting Fall 23

Phase 3 – Programs starting Fall 24 or after



Adult (25+ focused)

Night Programs



Noncredit ESL Cert

General Ed for

Transfer



Business Info

Worker 1&2 Cert



Addiction Studies AA

Finish Faster program

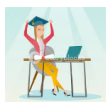


Focused on students 18-25 that can attend full time

Day Programs



Teacher Prep Pathway
MAESTROS



General Ed for Transfer*
Noncredit ESL Cert



Computer Science AST*
Animal Science AST**



- Dual Enrollment

Athletics

- Researching options

Phase 1 – Programs Started

Phase 2 – Programs Starting Fall 23

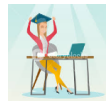
Phase 3 – Programs starting Fall 24 or after



Adult (25+ focused)



Night Programs



General Ed for
Transfer*



Noncredit ESL Cert



Chicanx Studies AA**

* Courses offered but not full program

** Proposed new program 2024-2025

Finish Faster program

Focused on students 18-25 that can attend full time



Day Programs



General Ed for Transfer



Plant Science - AST



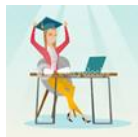
Engineering AS

Phase 1 – Programs Started

Phase 2 – Programs Starting Fall 23

Phase 3 – Programs starting Fall 24 or after

Adult (25+ focused)



Night Programs



General Ed for Transfer



Noncredit ESL Cert



Noncredit Business Cert

Finish Faster program

Focused on students 18-25 that can attend full time





Current Pathways

Gen Ed

North Monterey County, Soledad, Greenfield, King City,
Gonzales, Salinas Union

STEM Pathway to Allied Health or STEM

Soledad, King City

Manufacturing

Soledad

Projected Pathways

Animal Science

King City (2025)

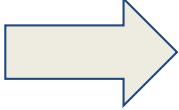
AG- Plant Science

North Monterey County (2024)

AG- Business

Soledad (2024)

MC Workforce Development Board Analysis, August 2022

Hartnell meets  High Demand Sectors

- Finance, Insurance, Banking, Real Estate
- Health Care
- Building and Construction
- Professional and Business Services
- Info and Communications Technology
- Agriculture Technology

5-Year Average of Students with Address near Centers Enrolling in Salinas Classes



	Castroville	King City	Soledad	
ABT	138	50.4	141.8	ABT
ADJ	208.6	54	220.4	ADJ
AOD	39	6.8	40	AOD
BUS	384.2	58.8	308.2	BUS
CSS	170.2	37.8	92.8	CSS
ECE	165	45.2	142.8	ECE
EDU	34.6	10.8	40	EDU
EGN	66	10	22	EGN
ESL	169	37.4	105.8	ESL

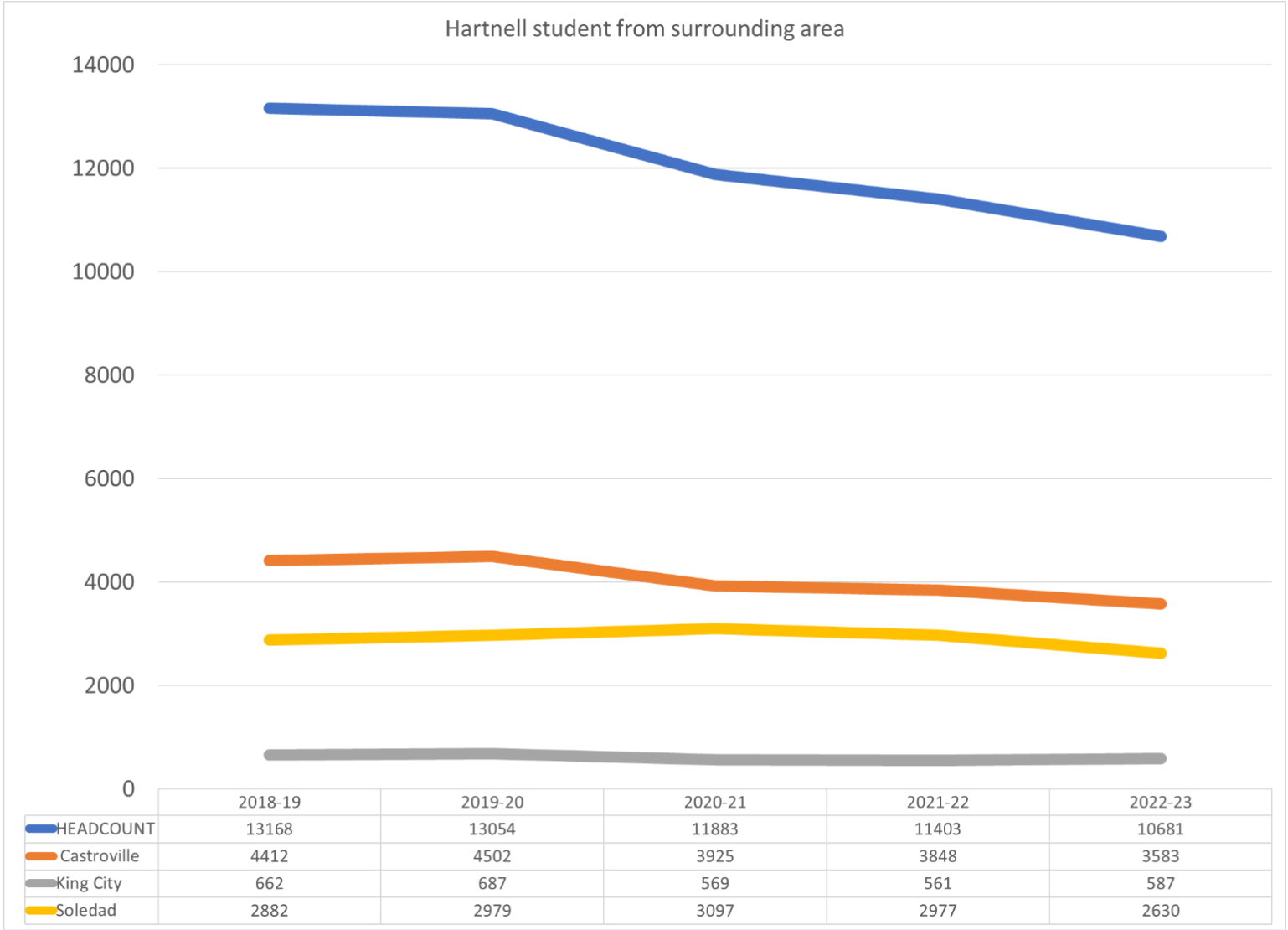
Phase 1 – Programs Started

Phase 2 – Programs Starting Fall 23

Phase 3 – Programs starting on or after Fall 24

Source: Hartnell Institutional Research Office, March 2023

How Many Students Live Near our Campuses?

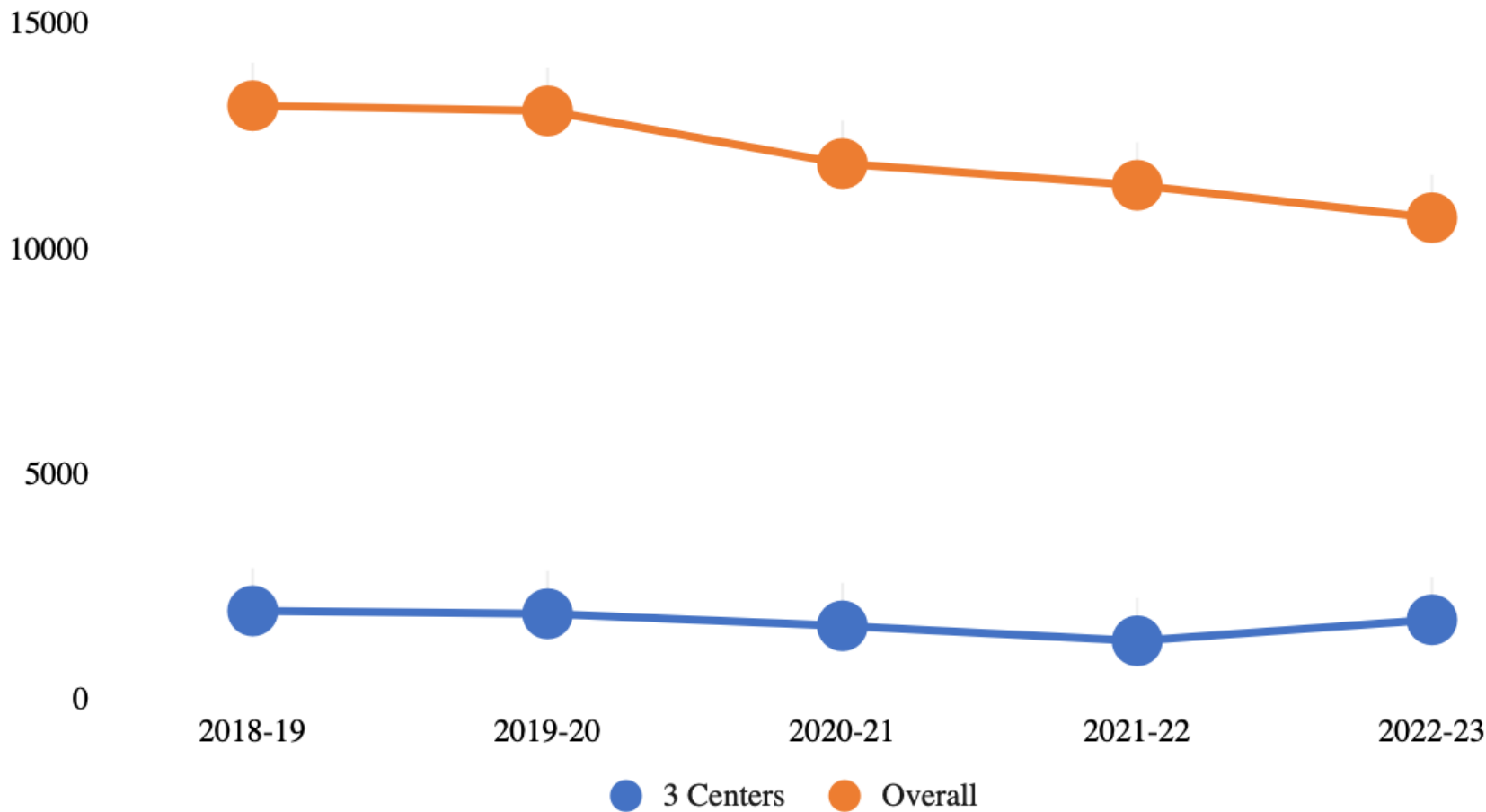


Source: Hartnell College Institutional Research Office, March 31, 2023

How Many Students at the Centers?



Number of Students by Location of Section



Source: Hartnell Community College Institutional Research Office, March 31, 2023

HIGH SCHOOL GRADUATES WHO DID NOT ATTEND COLLEGE WITHIN 12 MONTHS OF GRADUATION

	2017-2018		2018-2019		2019-2020	
	Number	%	Number	%	Number	%
North Monterey County	149	50.5%	149	44.2%	142	45.8%
Gonzales	50	24.6%	69	37.5%	64	35.6%
Soledad	143	40.1%	148	40.4%	143	39.2%
South Monterey County	131	31.6%	160	36.3%	190	38.0%

Source: DataQuest, California Department of Education,
<https://www.cde.ca.gov/ds/ad/dataquest.asp>

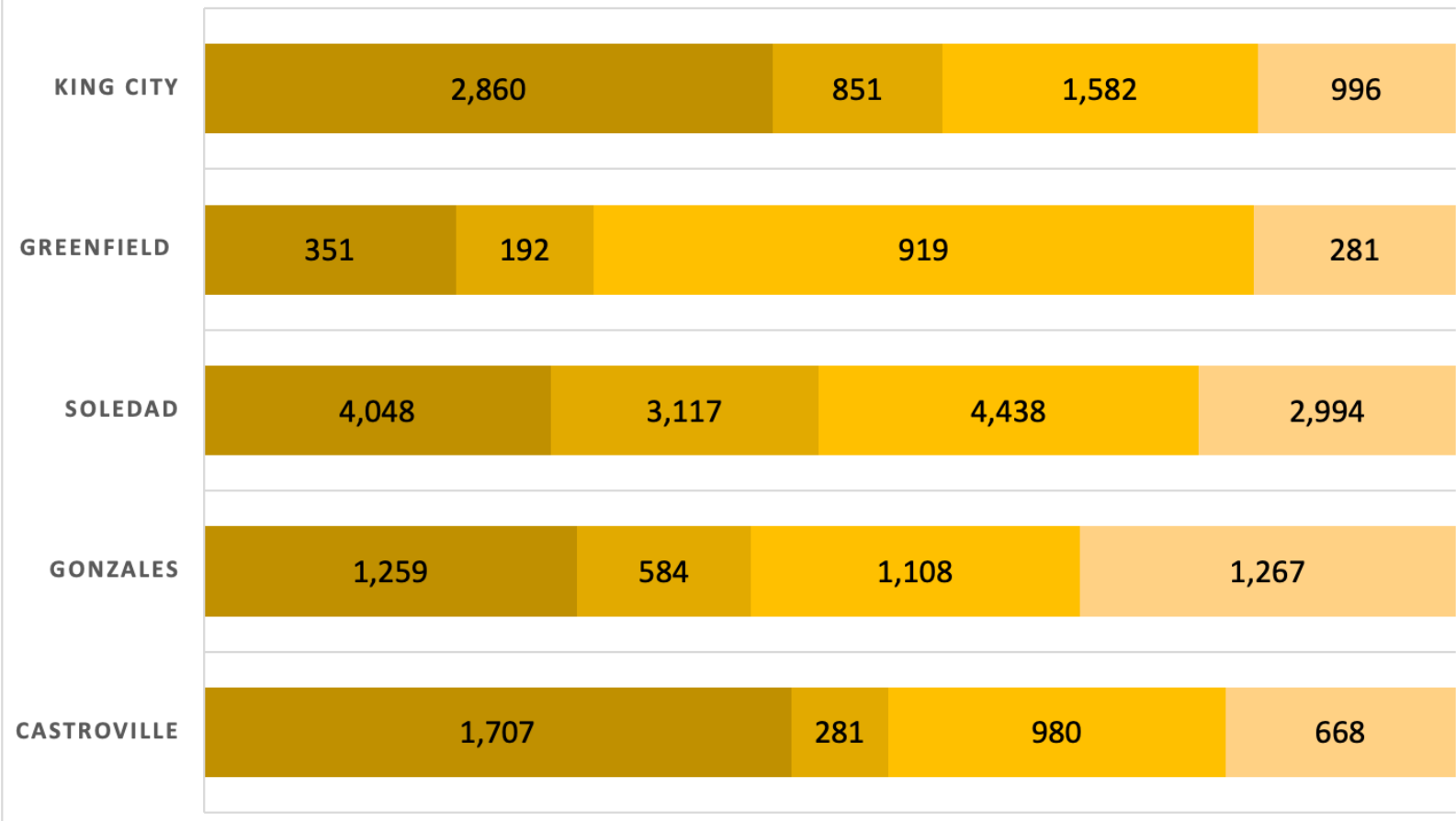
Adults without college degrees



PERCENT OF
ADULTS 25
AND OLDER
WITH NO
COLLEGE
CREDENTIAL:

EDUCATIONAL ATTAINMENT, ADULTS 25 YEARS OR OLDER

■ Less than 9th grade
 ■ 9th-12th grade, no diploma
 ■ High school diploma
 ■ Some college, no degree



86.2%

80.9%

88.2%

85.4%

91.0%

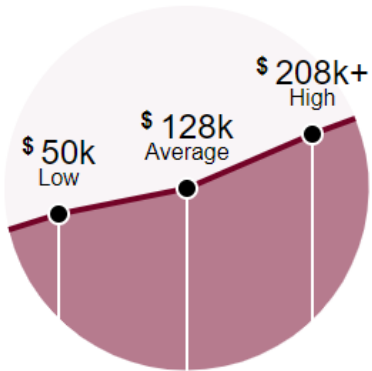
Source: American Community Survey, 2021, 5-year estimates tables, <https://data.census.gov/table?q=S1501+EDUCATIONAL+ATTAINMENT>
 GROWING LEADERS Support, Training, Engagement, Achievement | www.hartnell.edu

General Engineering - New at Castroville

Salary, Growth and Careers

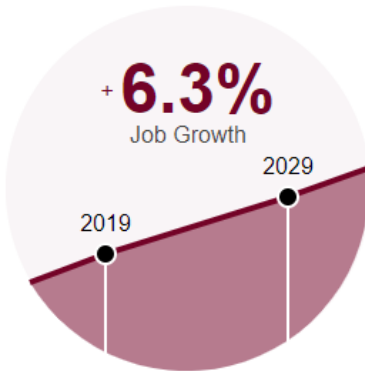
Salary

Careers associated with this program have a salary range from \$50,000 to over \$208,000 with an average salary of \$128,000.




Growth

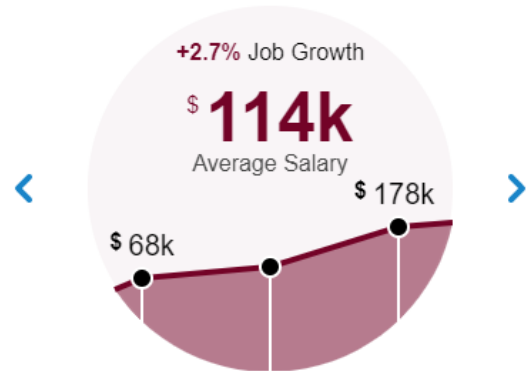
Career opportunities for this program are expected to grow nationwide from 2019 to 2029.




Careers

Engineers, All Other

 Education Level
Bachelor's degree



 Education levels are meant to represent what is typical for entry into the career, based on data from the U.S. Bureau of Labor Statistics.

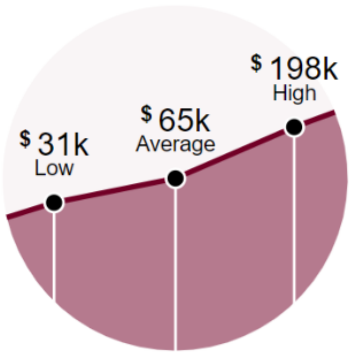
Source: Concentric Sky metamajor forecasts.

Agriculture Business AST- new at Soledad

Salary, Growth and Careers

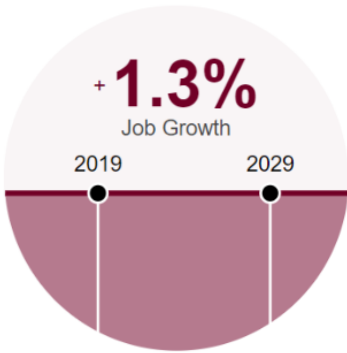
Salary

Careers associated with this program have a salary range from \$31,000 to \$198,000 with an average salary of \$65,000.




Growth

Career opportunities for this program are expected to change little nationwide from 2019 to 2029.




Careers

Buyers and Purchasing Agents

 **Education Level**
Bachelor's degree



 **Education levels** are meant to represent what is typical for entry into the career, based on data from the U.S. Bureau of Labor Statistics.

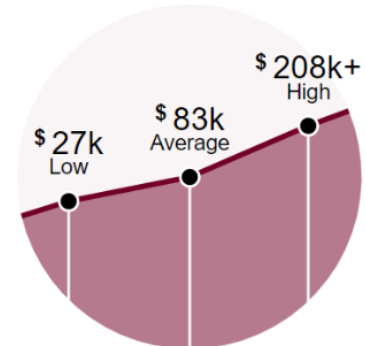
Source: Concentric Sky metamajor forecasts.

Administration of Justice AS & Cert - New at Soledad

Salary, Growth and Careers

Salary

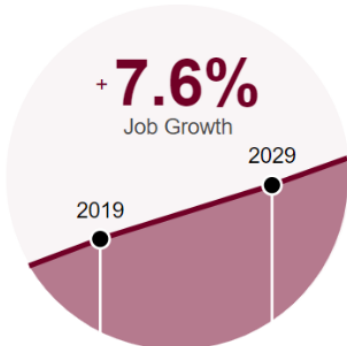
Careers associated with this program have a salary range from \$27,000 to over \$208,000 with an average salary of \$83,000.



Category	Value
Low	\$27k
Average	\$83k
High	\$208k+

Growth

Career opportunities for this program are expected to grow nationwide from 2019 to 2029.

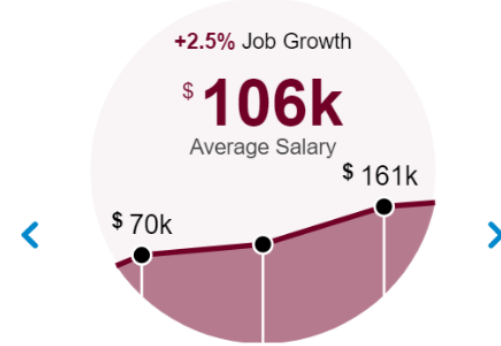


Year	Job Growth
2019	Baseline
2029	+7.6%


Careers

Detectives and Criminal Investigators

Education Level
High school diploma or equivalent



Metric	Value
Average Salary	\$106k
Low	\$70k
High	\$161k
Job Growth	+2.5%

 **Education levels** are meant to represent what is typical for entry into the career, based on data from the U.S. Bureau of Labor Statistics.

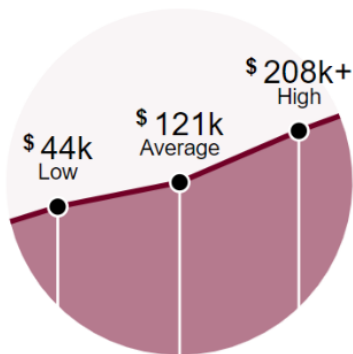
Source: Concentric Sky metamajor forecasts.

Computer Science AST - New at King City

Salary, Growth and Careers

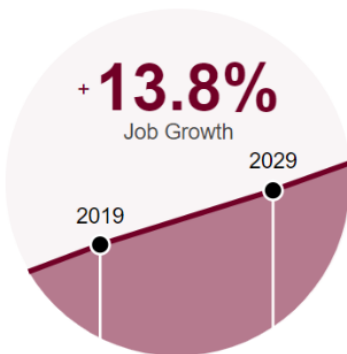
Salary

Careers associated with this program have a salary range from \$44,000 to over \$208,000 with an average salary of \$121,000.



Growth

Career opportunities for this program are expected to grow nationwide from 2019 to 2029.

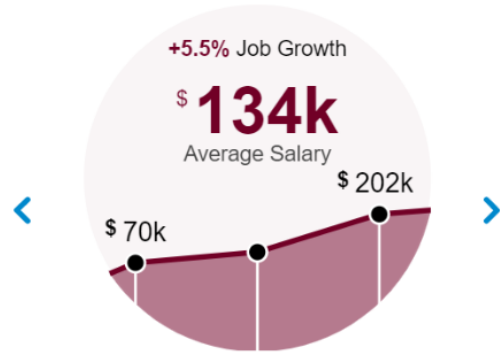



Careers

Computer Network Architects



Education Level
Bachelor's degree



 Education levels are meant to represent what is typical for entry into the career, based on data from the U.S. Bureau of Labor Statistics.

Source: Concentric Sky metamajor forecasts.

Thank you!

YOUR FUTURE STARTS HERE

