

# Presentation to College Planning Council

## Office of Continuing Education



**HARTNELL**  
**COLLEGE**

Ana González  
Director of Academic Affairs,  
Continuing Education  
November 6, 2019



**HARTNELL**  
**COLLEGE**



## **Vision**

Hartnell College students will be prepared to contribute as leaders to the intellectual, social, cultural, and economic vitality of our communities and the world.

## **Mission**

Focusing on the education and workforce development needs of communities in the Salinas Valley, Hartnell College strengthens communities by providing opportunities for students to reach career and/or academic goals (associate degrees, certificates of achievement, transfer to four-year institutions) in an environment committed to student learning, achievement, and success.

## **Strategies**

Students First; Academic and Service Excellence; Diversity, Equity, and Inclusion; Ethics and Integrity; Alliances; Leadership and Empowerment; Innovation; Stewardship of Resources; Health, Safety, and Security



### ***In the Salinas Valley...***

- **70,000 (34%)** have limited English skills (compared to 21% in CA)
- **38,000 adults (19%)** have 7<sup>th</sup> grade education or lower
- **65,600 adults (32%)** do not have a HS Diploma (compared to 17% in CA)
  - 108,800 (91%) speak Spanish at Home (followed by 1.8% Tagalog)
  - 4 Correctional Institutions located in the Valley
  - 10,000 incarcerated Men and Women in our district

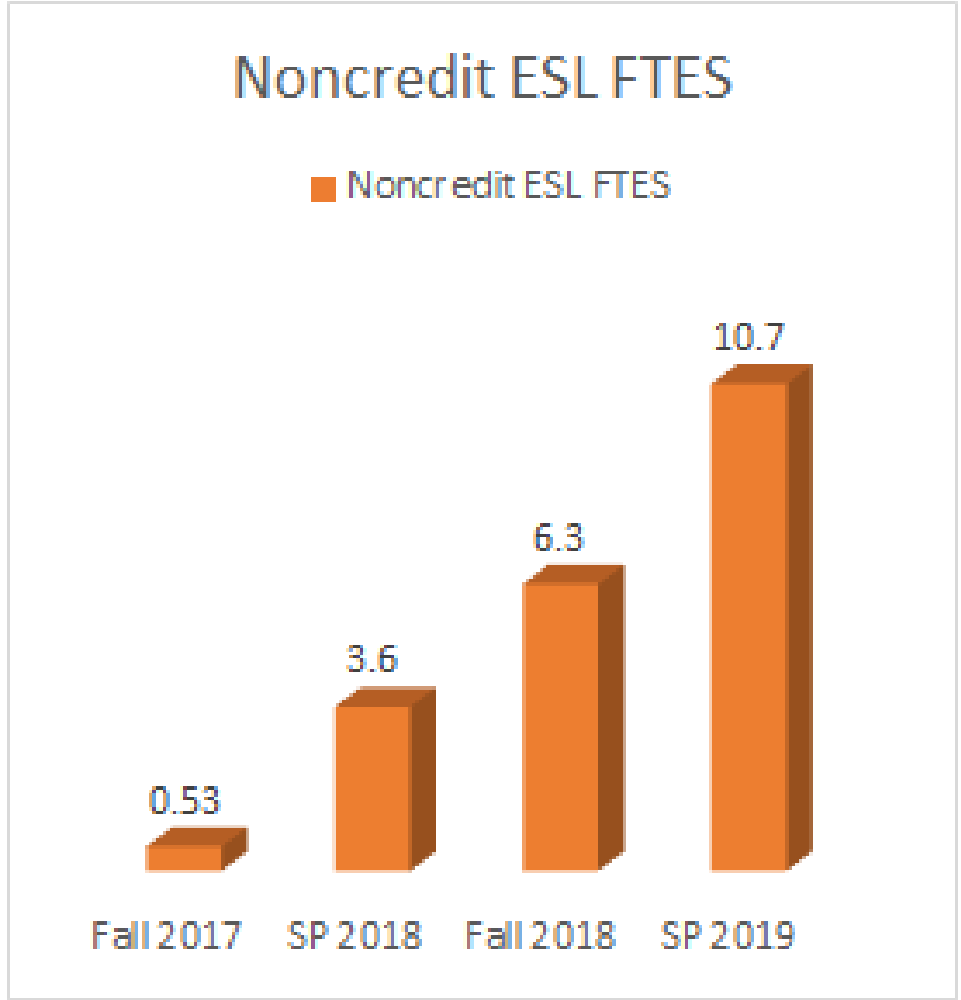
<https://caladulthood.org/2019FactSheets>

### **Office of Continuing Education focuses on:**

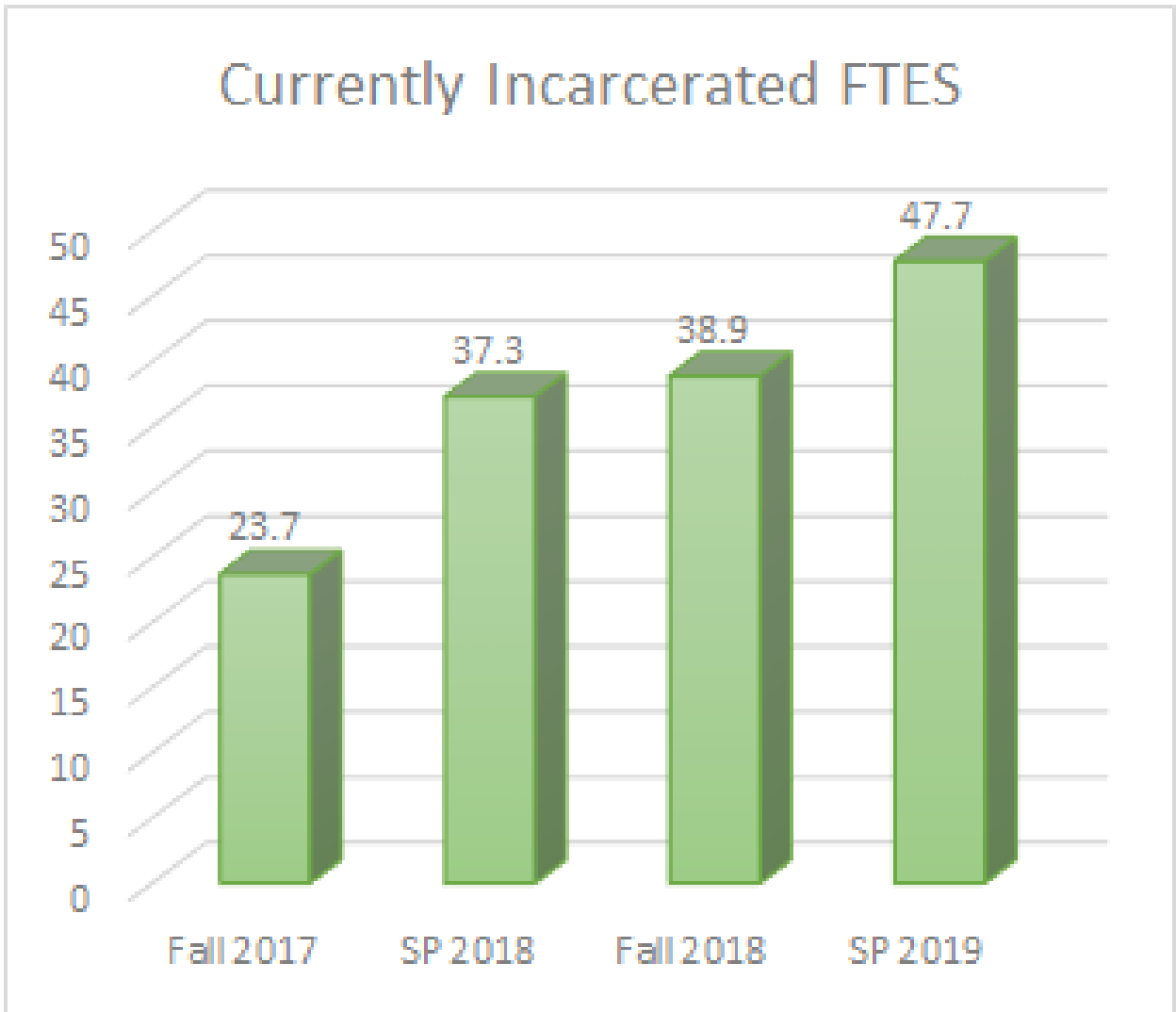
- Noncredit Programming/English Language Learners
- Currently and Formerly Incarcerated Students

## **Access to Education for ESL and Incarcerated Students:**

- Faculty
  - Recruit, Contract, Orient, Clearance Training, Evaluate, Support/Professional Development
- Course Creation
  - Offer courses that meet students' needs by offering courses that are appropriate, meet at various locations, and at various schedules (ESL)
  - transferable, credit bearing courses for incarcerated
- Matriculation Support
  - Paper Applications, Placement, Registration, a
  - Access to Counseling (Educational Plans) and Financial Aid

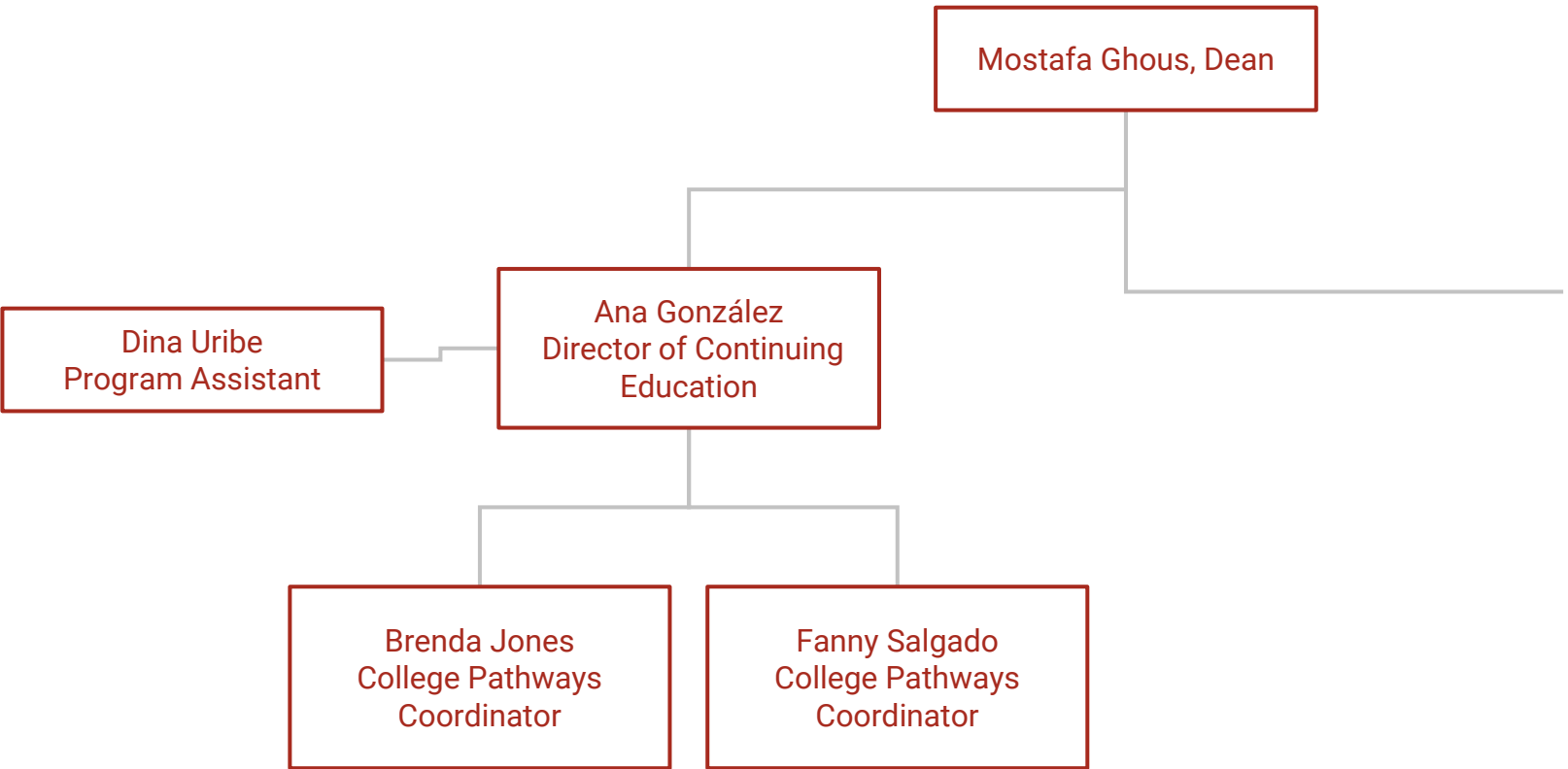


*Noncredit ESL is eligible for CDCP funding of \$5,457 per FTE*



*Funded at \$5,457 per FTE*

# Continuing Education Team





## Noncredit ESL

### Students:

- **Student Perception** - Is college for me?
- **Limited Computer Skills** - paper application and registration

### Hartnell:

- **Faculty Recruitment** - more needed
- **Marketing** - increase community awareness
- **Systems Built for Traditional Students** - Office hours, computer based processes
- **Pathways** - clarify ESL pathway, need CTE options
- **Data Collection/Reporting** - Adult Ed., MIS, New Student Funding Formula
- **Limited Resources** - staffing

## Inmate Education

### Students:

- **Lack of Technology** - all paper and pencil

### Hartnell:

- **Faculty Recruitment** - need more faculty, working conditions
- **Professional Development** - unique population and environment
- **Systems Built for Traditional Students** - paper based enrollment, add/drop, assignments, grading, transcripts
- **Provision of Student Support Services**
- **Pathways** - ability to complete degree
- **Data Collection** - MIS & New Student Funding Formula
- **Limited Resources** - staffing and funds

### Correctional Facilities:

- **Multiple and Distinct Yards**
- **Challenge Entering/Leaving Facility**
- **Lockdowns**





## Current Projects:

- Updating Marketing (5-12 touch points needed)
- Matriculation Mondays/Lanzate Lunes
- Student Handbook
- Faculty Handbook
- Faculty support/professional development
- Clarifying vocational and academic pathways that meet student needs
- Data Collection and Data Elements
- Advocacy for Nontraditional Students
  - College Redesign and Guided Pathways
  - Broadening concepts of Equity and Inclusion

